



education

Department:
Education
REPUBLIC OF SOUTH AFRICA

**NATIONAL
SENIOR CERTIFICATE**

GRADE 11

CONSUMER STUDIES

EXEMPLAR 2007

MARKS: 200

TIME: 3 hours

This question paper consists of 18 pages.

INSTRUCTIONS AND INFORMATION

1. SECTIONS A, B, C and D are compulsory. Choose ONE question from SECTION E, according to the practical component you selected.
2. Number your answers correctly according to the numbering system used in this question paper.
3. Begin each question on a NEW page.
4. Write neatly and clearly.

SECTION A**QUESTION 1**

Various possible options are provided as answers to the following questions. Choose the correct answer and write only the letter (A - D) next to the question number (1.1 – 1.19) in the answer book, for example 1.1 A.

- 1.1 A favourable condition for the growth of bacteria:
- A A temperature between 10 °C – 15 °C
 - B A temperature between 25 °C – 30 °C
 - C A temperature between 40 °C – 60 °C
 - D A temperature between 60 °C – 100 °C
- (1)
- 1.2 A financial plan for a family over a given period is a/an ...
- A household budget.
 - B estimated income.
 - C bank statements.
 - D estimated expenses.
- (1)
- 1.3 One of these bodies regulates and controls aspects of consumer protection:
- A The Business Practices Committee
 - B Provincial government agencies
 - C The South African Bureau of Standards
 - D The South African National Consumer Union
- (1)
- 1.4 The function of the South African National Consumer Union (SANCU) is to ...
- A investigate practices that may be harmful to consumers.
 - B make consumers aware of their rights and responsibilities.
 - C act as mediators between tenants and landlords.
 - D set specific standards to protect the health and safety of consumers.
- (1)
- 1.5 The following logo means:



- A Buying products for a specific South African market
 - B Standardising South African products
 - C Buying Kosher products from South Africa
 - D Buying truly South African-made products
- (1)

- 1.6 Pathogens cause ...
- A deterioration of food only.
 - B moisture loss of food.
 - C food poisoning.
 - D yeasting of food.
- (1)
- 1.7 When the design principle proportion is applied ...
- A attention is drawn to the focal point in the room.
 - B easy flowing lines were used.
 - C the objects in the room are placed in an orderly way.
 - D the size of the furniture is in the correct relation to the size of the room.
- (2)
- 1.8 The carbohydrate in cereals is ...
- A sugar.
 - B starch.
 - C lactose.
 - D maltose.
- (1)
- 1.9 Food spoilage may be caused by ...
- A adding salt or chemical preservatives.
 - B thawing meat at room temperature.
 - C inactivating food enzymes.
 - D using lower temperatures.
- (1)
- 1.10 This vitamin helps to maintain healthy mucous membranes:
- A Vitamin E
 - B Vitamin B
 - C Vitamin C
 - D Vitamin D
- (1)
- 1.11 Exclusive fashions are more often found in ...
- A departmental stores.
 - B chain stores.
 - C hypermarkets.
 - D specialty stores.
- (1)
- 1.12 Which ONE of the combinations of kilojoules (kJ) represents the energy yield of one gram of protein and one gram of fat respectively?
- A 16,8 and 28,3
 - B 16,8 and 37,8
 - C 18,6 and 28,3
 - D 28,3 and 37,8
- (2)

- 1.13 Nutrients required to build and maintain strong bones and teeth:
- A Calcium, phosphorus and protein
 - B Vitamin B, vitamin D and phosphorus
 - C Vitamin B, phosphorus and protein
 - D Calcium, phosphorus and vitamin D (2)
- 1.14 Indicate the THREE basic colours:
- A Yellow, red, green
 - B Yellow, blue, red
 - C Yellow, blue, orange
 - D Green, blue, orange (1)
- 1.15 The intensity (depth) of a colour is the...
- A brightness or dullness of the colour.
 - B amount of light it reflects.
 - C degree of lightness or darkness of a colour.
 - D dullness or darkness of a colour. (1)
- 1.16 Which ONE of the design principles is applied if all components in a garment look as if they belong together?
- A Balance
 - B Rhythm
 - C Emphasis
 - D Harmony (1)
- 1.17 Pamela plans her budget and realises that her expenses are more than her income. Choose the best combination of expenses for her to economise in order to remain solvent:
- A Insurance premium and rent
 - B Transport and annuities
 - C Car instalment and flat rent
 - D Cell phone and recreation (2)
- 1.18 A large, unique copper lamp suspended low over a dining room table illustrates the design principle:
- A Emphasis
 - B Harmony
 - C Balance
 - D Proportion (1)

1.19 Select the vegetable fibre:

- A Wool
- B Acrylic
- C Cotton
- D Silk

(1)
[23]

QUESTION 2

2.1 Choose an item from COLUMN B that matches a description in COLUMN A. Write only the letter next to the question number in the answer book.

COLUMN A		COLUMN B	
2.1.1	Black added to a pure colour	A	analogous
2.1.2	Black and white curtains against a white wall	B	split complementary
2.1.3	Wall paper in shades of yellow, red-purple and blue-purple	C	neutrals
2.1.4	Blue and orange striped curtains	D	triadic
2.1.5	A shaggy pile carpet in red and red-purple	E	tint
2.1.6	A nursery decorated in various tints and shades of blue for a baby boy	F	shade
2.1.7	A cushion in yellow, blue and red	G	complementary
		H	primary colours
		I	monochromatic
		J	double complementary

(7)

- 2.2 Choose a description from COLUMN B that matches an item in COLUMN A. Write only the letter next to the question number in the answer book.

COLUMN A		COLUMN B	
2.2.1	Departmental stores	A	retail/producer delivers goods to the house
2.2.2	Chain stores	B	offers advice to the consumer in urban areas
2.2.3	Door-to-door retailing	C	outlet focuses on particular product line
2.2.4	Supermarkets	D	goods are bought from the same warehouse for all shops
2.2.5	Specialty stores	E	a self-service food store
		F	various sections in the shop sell specific items
		G	wide variety of goods available

(5)

- 2.3 Re-arrange the steps on financial planning in the correct sequence. Write only the letters next to the question number in the answer book.

- A Evaluate and improve your plan
- B Compile a plan to reach goals
- C Define goals
- D Implement your plan
- E Establish priorities

(5)

[17]**TOTAL SECTION A:****40**

SECTION B**QUESTION 1**

- 1.1 Read the case study given below and answer the questions that follow.

Lee-Ann is 17 years old and in Grade 11. She is of medium build and is very health conscious. She suffers from anaemia. She exercises daily and her energy intake is 12 000 kJ per day.

With reference to the case study use the table below to answer the questions:

Recommended Dietary Allowances (RDA)

Information	Male 14 – 18	Female 14 – 18
Energy kJ per day	12 500	9 100
Calcium (milligrams)	1 300	1 300
Iron (milligrams)	11	15

- 1.1.1 Explain the difference in the nutritional requirements for males and females. (4)
- 1.1.2 Name TWO sources of food that can help Lee-Ann to eliminate her anaemic condition. (2)
- 1.1.3 Describe the main functions of the following nutrients in the body:
- (a) Protein (2)
 - (b) Carbohydrates (2)
 - (c) Fats (2)
- 1.2 Compare Lee-Ann's energy intake with the RDA table. Explain your conclusion. (4)
- 1.3 Discuss the nutritional needs of an elderly person. (4)

[20]

QUESTION 2

Read the case study and answer the questions that follow.

Learners in a hostel were given ham and cheese sandwiches, fried chicken drumsticks and boiled eggs for lunch. Due to the shortage of staff the lunch had to be prepared a day before. The refrigerator was full and the food was left uncovered overnight in the pantry.

The next day the kitchen was still very dirty and untidy due to the shortage of staff. About two hours after lunch two learners fell ill. By the end of the day a number of learners were ill and admitted to hospital.

- 2.1 Identify the micro-organism that caused the food poisoning. (1)
- 2.2 State the symptoms of the disease. (2)
- 2.3 Suggest the appropriate hygienic food practice to ensure food safety in this scenario. (5)
- [8]**

QUESTION 3

- 3.1 Explain how the following factors influence people's choice of an outlet when purchasing food items:
- 3.1.1 Safety of food (3)
- 3.1.2 Quality of food (3)
- 3.1.3 Prices (2)
- 3.2 Discuss why it is important a consumer takes note of the following information on the label of a tub of yogurt:
- 3.2.1 List of ingredients (2)
- 3.2.2 Expiry date (2)
- [12]**

TOTAL SECTION B: 40

SECTION C**QUESTION 4**

Very few people have ideal figures, so everyone strives to create the illusion of a well-proportioned figure.

- 4.1 Discuss guidelines for the following persons' choice of clothing to flatter their figures:
- 4.1.1 Short, stout figure (5)
 - 4.1.2 Long, slim figure (5)
- 4.2 Explain how textures can be used to create an illusion of slimness. (4)
- 4.3 Define the following design principles:
- 4.3.1 Proportion (2)
 - 4.3.2 Rhythm (2)
 - 4.3.3 Harmony (2)
- 4.4 State TWO ways in which rhythm can be achieved when designing garments. (2)
- [22]**

QUESTION 5

Read the case study and answer the questions that follow:

Lucy and Nancy are best friends. Lucy likes buying her clothes from factory shops because prices are low and easily affordable. Nancy has an account at one of the speciality fashion shops. Lucy keeps complaining about her clothes losing shape and colour after the first wash. Nancy said, '... the price is not always equivalent to quality'.

- 5.1 Evaluate the factory shops according to the:
- 5.1.1 Quality (2)
 - 5.1.2 Price (2)
- 5.2 Describe the information found on a label of a garment. (4)

5.3 Explain how the following factors will influence your choice when buying a pair of jeans:

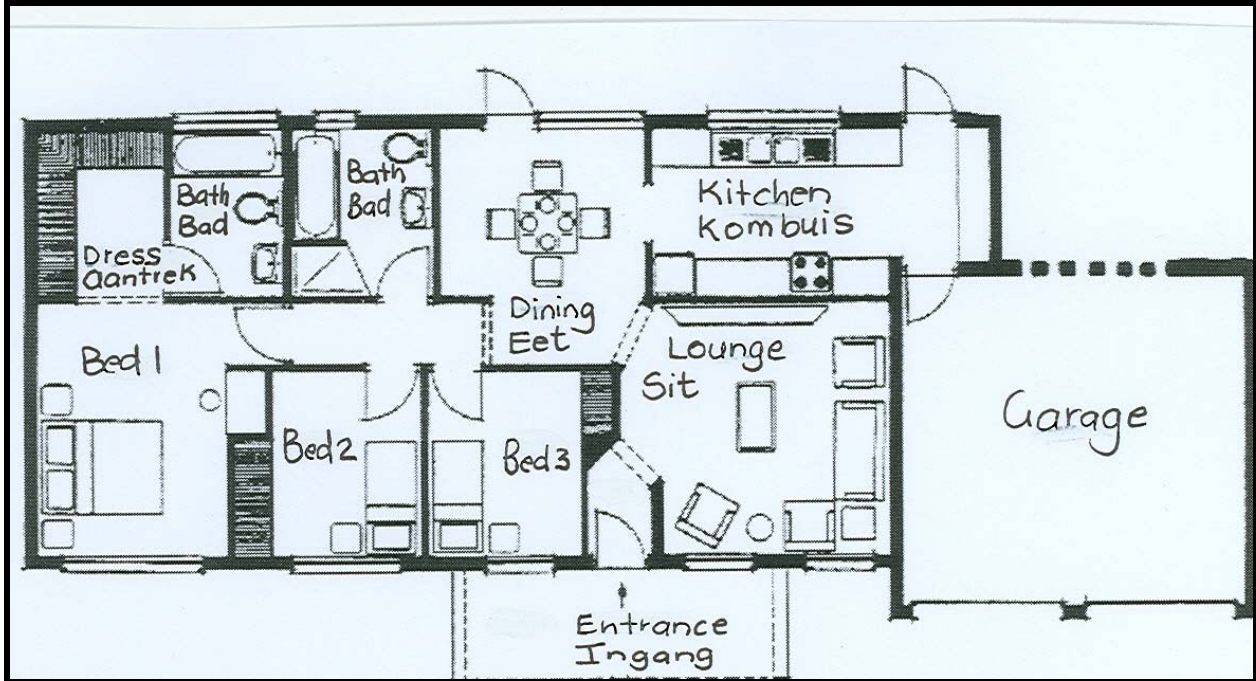
- | | | |
|-------|------------------|-------------|
| 5.3.1 | Denim fabric | (4) |
| 5.3.2 | Variety of shops | (4) |
| 5.3.3 | Size | (2) |
| | | [18] |

TOTAL SECTION C: 40

SECTION D

QUESTION 6

Study the floor plan below and answer the following questions:



6.1 Define the term *functional design*. (3)

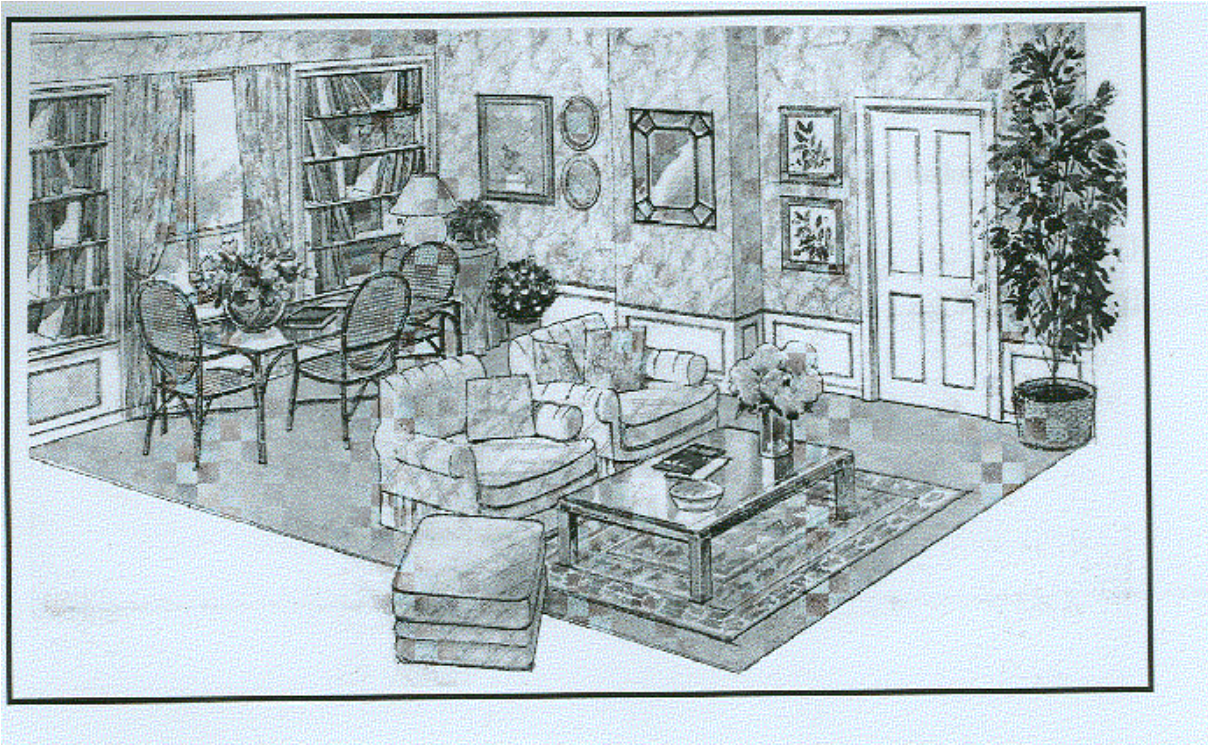
6.2 The house shown on the plan has the rooms ideally grouped into three functional areas. Identify these THREE areas and tabulate your answer as follows:

Functional area	List of rooms in each area
6.2.1	
6.2.2	
6.2.3	

(2)
(2)
(2)

6.3 To help create more space in rooms, good traffic patterns must be planned. Evaluate the placement of the lounge furniture according to the traffic patterns in and through the lounge. (3)

6.4 Study the picture below and answer the questions that follow:



- 6.4.1 Identify how harmony has been achieved in this room. (4)
- 6.4.2 Identify TWO types of lines found in the picture. Motivate your answer. (4)
- 6.4.3 State and explain TWO ways in which rhythm has been achieved in this room. (4)
- 6.4.4 Explain the advantage of using tiles as a floor finish in an open plan room. (4)
- 6.5 Identify functional considerations to take into account when selecting textile fibres for the following items in the room:
- 6.5.1 Curtains (3)
- 6.5.2 Chairs (2)
- 6.6 Criticise the size of the coffee table in relation to the chairs. (2)
- 6.7 How will the wide range of chairs available in furniture outlets influence your choice when buying a chair? (4)

TOTAL SECTION D: 40

SECTION E

QUESTION 7: FOOD AND NUTRITION

7.1 Study the recipe below and answer the questions that follow:

Swiss Roll

Temp: 200 °C

Ingredients

3 eggs (room temperature)
100 ml castor sugar (84 g)

5 ml lemon juice
150 ml cake flour (72 g)
3 g salt

Method

1. Beat eggs and sugar with an egg beater until creamy and light in colour. (all sugar must be dissolved)
2. Add and beat mixture.
3. Sift together and sift a thin layer over sugar and egg mixture.
4. Fold in lightly with a palette knife. Repeat until all the flour has been used.
5. Spoon immediately into a prepared Swiss roll pan and bake for 10 minutes.
6. Turn out on a slightly damp cloth. Cut off the sides.
7. Spread with your favourite filling for example apricot jam and roll up.

- 7.1.1 Identify the raising agent used. (1)
- 7.1.2 Identify THREE ways how the raising agent is incorporated in the mixture. (3)
- 7.1.3 Name TWO ingredients which give structure to the baked products. (2)
- 7.1.4 State TWO advantages of using castor sugar rather than granular sugar. (2)
- 7.1.5 Why do you use a palette knife and not a wooden spoon? (2)
- 7.1.6 Identify and classify the cooking method used. (2)
- 7.1.7 Identify TWO methods of transferring heat when baking the cake. (2)
- 7.1.8 What will happen if:
- (a) The oven is too cold (2)
- (b) The oven door is slammed (2)
- 7.1.9 What does the sponge cake and Swiss roll have in common? (2)
- 7.1.10 Why do you have to invert the cake on a slightly damp cloth? (2)

7.2 Use the table and answer the following questions.

Ingredients	Amount bought	Amount used	Purchase price
Cake flour	1 kg (1 000 g)	150 ml	R6,85
Salt	500 g	3 g	R2,95
Castor sugar	500 g	84 g	R6,50
Eggs	6	3	R5,45
Lemon juice	500 ml	5 ml	R4,50

- 7.2.1 Calculate the unit price for ONE Swiss roll. Show your calculations. (9)
- 7.2.2 Calculate the production cost of ONE Swiss roll if you worked 30 min at R15 per hour at a profit of 10% of the unit price and the overheads are R1,00. (6)
- 7.2.3 List THREE other factors that contribute to the total cost of the enterprise. (3)

OR

QUESTION 8: CLOTHING

Read the case study and answer the questions that follow:

Summer in South Africa is very hot. You decided to investigate the possibility of making use of cheese cloth (which is a very thin, cool cotton fabric) to make shirts in various sizes. You could sell it at a stall next to the holiday resort.

8.1 Study the sketch below and answer the questions that follow:



- 8.1.1 What are the advantages of choosing this pattern? (3)
- 8.1.2 State FOUR advantages of using cheese cloth for the shirt. (4)
- 8.1.3 You decide to use bias binding to finish off the neckline instead of using the collar. Is this a good decision? Motivate your answer. (2)
- 8.1.4 Explain, with a reason, the type of seam you will use for your shirt. (2)
- 8.1.5 What type of hem can be used? (1)
- 8.1.6 What are the requirements of a good hem? (4)
- 8.1.7 Suggest SIX decorative finishes that can be used to ensure uniqueness of product and so generate good sales. (6)
- 8.2 Calculate the unit price for one shirt using the table below (show your calculations):

Requirements	Amount used	Purchase price
Pattern	1	R32,00
Cheese cloth	1,5 m	R30,00 per metre
Thread	1 reel	R7,50
Vilene	20 cm	R4,50 per metre
Buttons	5	R2,50 each

- 8.2.1 Pattern (1)
- 8.2.2 Cheese cloth/cotton (2)
- 8.2.3 Thread (1)
- 8.2.4 Vilene (2)
- 8.2.5 Buttons (2)
- 8.2.6 Total cost of materials used (1)
- [9]**
- 8.3 Calculate the production cost of ONE shirt at 10% profit of the unit price if you worked for 3 hours at R15 per hour. The overheads cost is R5,00. (6)
- 8.4 List THREE other factors which contribute to the total cost of the enterprise. (3)

OR

QUESTION 9: SOFT FURNISHINGS

9.1 You are required to make 20 padded place mats (30 x 15 cm) for a guest-house. You are required to use bias binding as an edge finish.

- 9.1.1 How many layers will each place mat consist of? (1)
- 9.1.2 Name and explain the purpose of each layer. (6)
- 9.1.3 Give the sequence you will follow during the production of the place mats. (5)
- 9.1.4 What can be done to help ensure that the layers stay in place while sewing them together? (1)
- 9.1.5 Name FOUR decorative finishes that can be used to ensure uniqueness of product and so generate good sales. (4)
- 9.1.6 How can you make certain that all the placemats are the same size? (2)
- 9.1.7 Give THREE advantages of using cotton. (3)

9.2 Calculate the unit price for 20 place mats referring to the table below (show your calculations):

Requirements	Amount used	Purchase price
Calico	2 metres	R9,99 per metre
Batting (115 cm)	2 metres	R11,00 per metre
Thread	1 reel	R7,50
Bias binding	19 metres	R1,80 per metre

- 9.2.1 Cost of calico used (2)
- 9.2.2 Cost of batting used (2)
- 9.2.3 Cost of bias binding (2)
- 9.2.4 Cost of thread bought (2)
- 9.2.5 How much will the materials cost (1)

9.3 Calculate the production cost of 20 place mats if you worked for 5 hours at R15 per hour at a profit of 10% of the unit price. The overheads cost is R 5,00. (6)

9.4 List THREE other factors which contribute to the total cost of the enterprise. (3)

TOTAL SECTION E: 40

GRAND TOTAL: 200