



education

Department:
Education
REPUBLIC OF SOUTH AFRICA

**NATIONAL
SENIOR CERTIFICATE**

GRADE 11

**SISWATI LULWIMI LWASEKHAYA (HL)
LIPHEPHA LEKUCALA (P1)**

SIBONELO (EXEMPLAR) 2007

EMAMAKI: 70

SIKHATSI: 2 ema-awa

Leliphepha linemakhasi lalishumi nakubili.

TICONDZISO

1. Leliphepha linemakhasi lali-12.
2. Phendvula yonkhe imibuto ngesiSwati.
3. Cala lesi naleso sigaba ekhasini lelisha uphindze udvwebele ekugcineni kwaleso sigaba.
4. Shiya umugca emkhatsini wetimphendvulo takho.
5. Caphelisisa sipelingi / lupelomagama nendlela lewakha ngayo imisho.

SIGABA A

1. Fundza lendzaba lelandzelako bese uphendvula imibuto lelandzelako:

Njengobe sekubhoke bugebengu eSwatini kakhulu lapha kaManzini, umphatsi wesigodzi sakaManzini utjele emaphoyisa kutsi ahlale acaphele, acaphele tigebengu letitsengisa tidzakamiva kanye naletihamba tiphetse emaphepha etimalimbumbulu. Liphoyisa lemfati , Fokisi Ncobile Ngwenya lophetse luhlangotsi loluphenya emacala emgunyati kanye netidzakamiva uniketwe lijoke lekutsi yena nabofokisi labaphetse, babambe imoto lencane lebovu yekuchamuka kulelinye live ledvume ngekutsi ngiyo leyenta lomonakalo nangekutsi futsi ihamba tigebengu letiyingoti sibili.

Kusekuseni ngeNgongoni ngelilanga lelendvulela Khisimusi, fokisi Ncobile, LaNgwenya, ume efasitelweni lelihovisi lakhe, edolobheni kaManzini. Fokisi LaNgwenya ubuka ngephandle ngobe ukhangwe ngumsindvo webantfu labaphitsitelako, behla benyuka nelidolobha.

Kuwo lowo mzuzwana asemile, abone imoto lebovu iVolvo ingena ima ngephandle ecadzini kwesitezi. Lemoto inetinombolo taseNingizimu Afrika. Umshayeli walemoto ake ahlalahlale sikhashana kulemoto kepha agcine aphumile. Kuphume lemfishane indvodza ifake tibuko telilanga kantsi liyakhiza. Lendvodza icalate tonkhe tinhlangothi bese ijikela ebhuthini yemoto, nakhona ifike icalate sikhashana ngembikwekutsi ivule ibhuthi. Ebhuthini ivule lokunye lokungathi liputumende iphenyaphenye.

Ime sikhashanyana iphindze icalate macala onkhana, bese ikhipha intfo letsite, iyifaka ekhikhini langekhatsi ebhantjini, ivale ibhuthi iyikhiye. Ikhiye tonkhe tivalo temoto bese iyehla icondza entasi esiteshini semabhasi. Ihamba ngekukhululeka ishaya inkwela.

'Sengatsi lamuhla ngitawutfola litho ekuseni nje kusa. Yini lomfokati ngive angingena emitsanjeni? Ngiva uyangisindza,' sekusho yena fokisi, emehlo akhe angesuki kulendvodza.

'Sengatsi kukhona lanako. Ngiva kutsi ake ngimlandzele ngimshophe ngibone kutsi tsine naye sitakuphelelaphi. Phela uma kweswelekile ngingamsingatsa imphilo yakhe lesasele lapha emhlabeni ngite ngenetiseke ngayo'.

Fokisi LaNgwenya avule sisefo, akhiphe livolovolo, iBaby Brown 9mm. Alivule, akhandze kutsi magazini ugwele tinhlavu letisiphohlango. Atsatse bomagazini lababili, nabo labagwele, abafake ekhikhini. Ahlole ngelifasitelo abuke kutsi angakwati yini kutsatsa inombolo yemoto. Ayitsatse inombolo letsi CML 122 MP. Amoyitele.

Ehle agijima fokisi aphutfume ngaphandle. Endlule embikwalemoto ehlele esiteshini semabhasi ahambe acalata lomfokati, kepha lutfo. Angene nasemabhasini kepha nakhona angamkhandzi. Atsi nakabuyela ehhovisi ayibone lendvodza emotini yayo ikanye nalenye indvodza.

Atsi aseta bucalu idvume imoto kuphume indvodza ibheke enshonalanga. Isuke nemoto yenyuke ingene emgwacweni lomkhulu.

Agijime abheke lapho emise khona iVallient yakhe, efike aphoseke ngekhatshi ayishaye ivume icondze emgwacweni lomkhulu. Anyatsele emafutsa, enyuse lidolobha ate eme eGeorge Hhotela. Aphume ayingayinge afunana nalemoto kepha angayitfoli. Ajike abuyele edolobheni akhandze imoto lefana nalena layicoshako, ime ebhaleni lelingasesiteshini semabhasi, kepha lemoto inetinombolo talapha eSwatini, SD 007 I M.

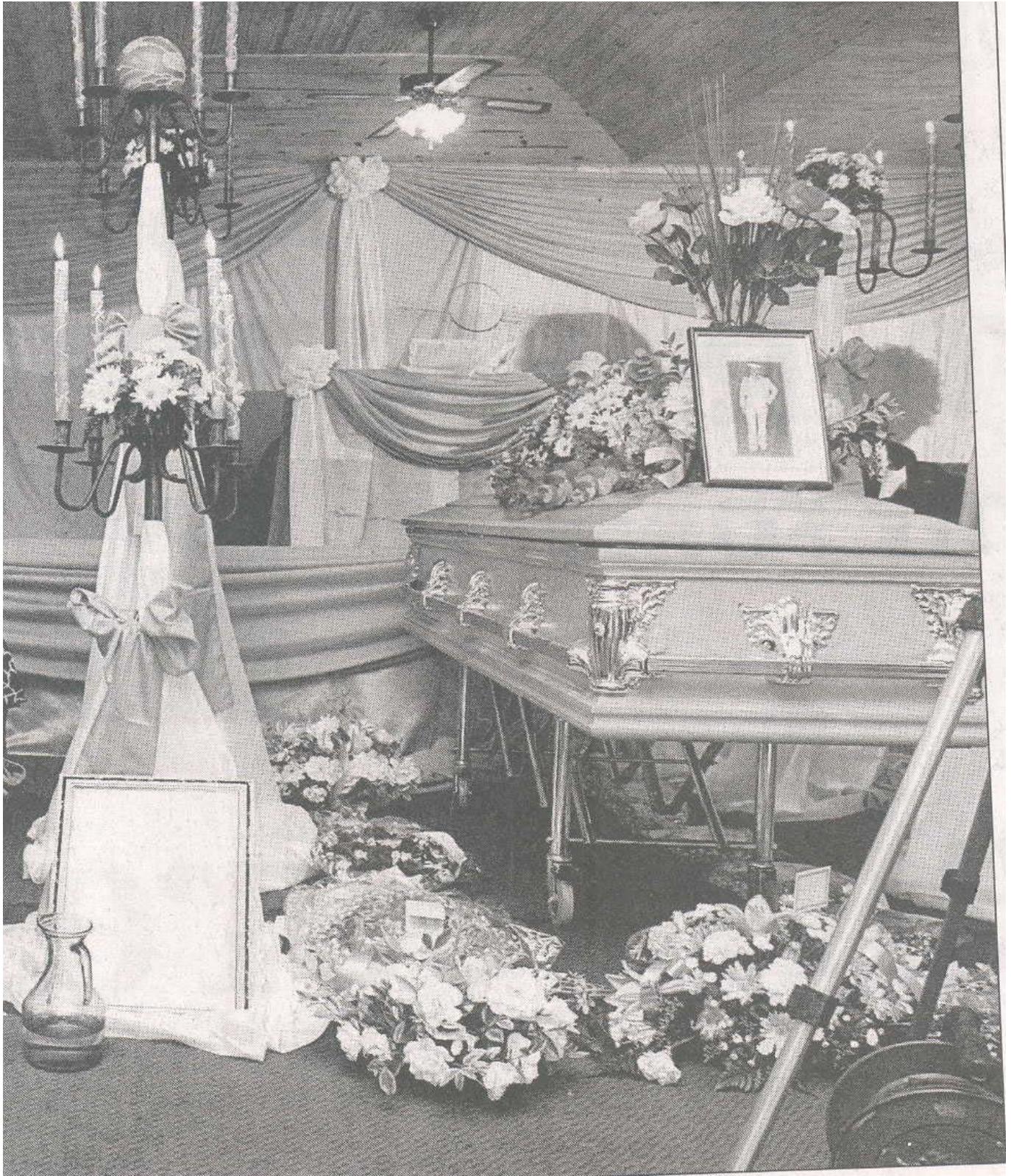
Ehle, adle umyingayingana edvute nalemoto ngenhloso yekubona umtselo wayo, kepha angaboni lutfo bese ungena ebhaleni. Atitsele ngalabandzako, atihambise shengatsi kute lokwentekile. Atsenge sikotela sabhiya anatse bume.

Asanatsa bhiya wakhe abone indvodza lefana naleyo layifunako iphuma endlini lencane. Lendvodza ayibone kutsi icishe ifane ncamashi nalendvodza layifunako ngaphandle kwekutsi lena inemphandla lushashadvu, ifake emafalikiki akanokusho, futsi yembetse lokwehlukile kuloku lokwembetfwe ngulenyoni yakhe. Iphume lendvodza icondze emotweni lebovu ishayeke ibheke enshonalanga.

LaNgwenya umancikancika akati kutsi uyamlandzela yini lomfokati nobe chake. Lokwenta kutsi angakwati kuncuma ngekushesha kwekutsi kute ngisho nalobuncane bufakazi lobentiwe nobe lobentiwe ngulomfokati, futsi ute liciniso mbamba kutsi lendvodza yelumanyule enhloko ngiyo layibone ekuseni wayisola kungatsi inelubatsa.

- 1.1 Phendvula yonkhe imibuto ngalenzaba lengenhla:
- 1.1.1 Bhala ligama lenyanga iNgongoni, lelitsetfwe esiNgisini. (1)
- 1.1.2 Imalimbumbulu kushiwo imali lenjani? (1)
- 1.1.3 Ngubani Ngcongcoshe weTemaphoyisa waVelonkhe eNingizimu Afrika lekumele kukhalelwe yena ngalobugebengu? (1)
- 1.1.4 Kucalata kwalomfokati kwaba nagalelo lini kuLaNgwenya? (2)
- 1.1.5 Kulesicephu lesingenhla kuyabonakala kutsi umsebenzi wabofokisi umiselwe bulili bonkhe. Sekela lombono ngekucaphuna endzabeni. (2)
- 1.1.6 Bhala kutsi betitingaki nekutsi bekunguyiphi inyanga nakwenteka lendzaba lengenhla. (2)
- 1.1.7 Kugcoka kwalomshayeli weVolvo bekuphambene nesimo selitulu. Sekela lombono ngekucaphuna endzabeni. (2)
- 1.1.8 LaNgwenya waphuma netinhlavu letingaki nasalandzela indvodza yeVolvo? Bhala linani laletinhlavu ngemagama hhayi ngetinombolo. (2)
- 1.1.9 Chaza kafisha umsebenzi labenikwe wona LaNgwenya. (2)
- 1.1.10 Ngekwakho kubona lendvodza lebeyiphuma endlini lencane ngabe bekungiyi yini lena lefunwa nguLaNgwenya? Sekela imphendvulo yakho. (2)
- 1.1.11 Ucabanga kutsi lendvodza yeVolvo beyifakani ekhikhini layo kuloko beyikutsatsa ebhuthini? Bhekisa imphendvulo yakho endzabeni. (2)
- 1.1.12 Kutsiwa emaphoyisa akatitsatseli etulu tintfo. Utsini ngalesento saLaNgwenya ngalomsebenzi labukene nawo? Chaza. (2)

1.2 Bukiswa lesibonwa (sitfombe) lesingentasi bese uphendvula imibuto letawulandzela:



- 1.2.1 Lamanti lasejekeni anikwa bantfu labanjani kulesimo lesisemfanekisweni? (1)
- 1.2.2 Kushisa kulendlu lesesitfombeni kuncotjwa ngayiphi indlela uma ubukisisa lesitfombe? (1)
- 1.2.3 Uma ubukisisa lesitfombe lesingenhla ngabe lomuntfu lolele mdvuna nobe msikati yini? Sekela imphendvulo yakho. (2)
- 1.2.4 Ucabanga kutsi kukhanyiswa kwemakhandlela kuluphawu lwani etimeni letinjena? Chaza. (2)
- 1.2.5 Timbali letisemfanekisweni tiluphawu lwani? (2)
- 1.2.6 Uma ubukisisa lesitfombe lomuntfu loшонile ngabe mdzala nobe luswane? Usho ngani? (2)

SAMBA SESIGABA A: 30

SIGABA B

2. Fundza lethekesthi lelandzelako bese uyayifinyeta ngemagama langemashumi layimfica (90):

Kusebusuku ngetitfuba tensimbi yelishumi lapha elokishini laseBhaptini lelatiwa ngekutsi kuseMjindini. Linyenti lebantfu selidvonsa tikhumba. Etitaladini sekuhamba labo nje lababuya kuyewutidlela.

Lapha-ke kusemtini waMbolwane Mavuso. Lomuti unemakamelo lamabili nje kuphela. Likamelo lekulala kanye nelikhishi. Mbolwane Mavuso uteke LaMasuku, intfombi yalapha kaMakepisi. Inkhosi yababusisa ngemntfwana munye wemfana. Lokwemfanyana sekukhulakhulile ngobe naku sekuyagijima kantsi nekukhuluma sekuyashwamphuluta.

'Uyati lamuhla ngiva ngishaywa luvalo mntfwanaketfu, utsi angeke afike nje Mavuso?' Kubuta Macatsa Lusenga lishende laLaMasuku.

'Hhayi ungesabi mntfwanaketfu, Mavuso wehlulwa ngemabele. Yindvodza nje ngobe naku ugcoka libhuluko. Nome angefika nyalo utawufika afile kudzakwa...'

'Hhayi kantsi kungenteka efike?' kubuta Macatsa ngekwetfuka.

'Hhayi ngeke asefika, akakavamisi kufika sekushaye insimbi yelishumi nobe ngabe angadzakwa kangakanani.' Kusho LaMasuku.

'Hhayi kuncono-ke kodvwa umuntfu lonatsa tjwala akusuye umuntfu wekwetsenjwa.'

Kutsite angakalimiti lelo, kwevakala kunconcotsa emnyango. 'Vula LaMasuku, sengifikile mine Mbolwane! Vula bo!' Kumemeta Mbolwane ngelivi lelivalakalako kutsi sewutidlele lomdzala.

'Uyabona-ke LaMasuku!' Kusho Macatsa eca lamadze emagoso atsatsa timphahla takhe bekakadze atigace etikwesitulo. 'Hhayi ngena ngaphasi kwembhedze.' kusho LaMasuku ngekuhleba.

'Utsini? Ngingene ngaphasi kwembhedze? Hhayi ngeke ngikhone. Vula lifasitelo wena ngiphume ngibaleke.'

'Emafasitelo onkhe alapha ekhaya afakwe tinsimbi tekuvimbela labagecekeza tindlu, ngeke ukhone kuphuma ngalo. Nangale ekhishini ngeke ukhone kuphuma khona ngobe kulele umntfwana utawubuta kutsi ufunani ngalapho.' Kusho LaMasuku.

'Ewu ngatifaka nebakitsi. Lamuhla vele bebangibikela labaphasi kutsi ngihambe kabi.' Kusho Macatsa angena ngaphasi kwembhedze.

'Hheyi wena LaMasuku ngitsi vula bo! Khona nje wakhanyisa likhandlela ngalesikhatsi unendvodza yini lapha endlini? Inyanisi ngabe uyangihlolela make waSibhuluja. Vula bo!'

'Yebo sengiyavula!' Kusho LaMasuku.

'Sewuyavula kantsi yini lelengaka loyifihlako lapha endlini? Vula bo! Yehheni! Awusangifuni yini lapha ekhaya? Sewutfole lenye indvodza?'

Hhayi-ke wawuvula umnyango LaMasuku, wangena Mbolwane wacalata yonkhe indlu.

'Hawu! Sawubona phela babe. Lamuhla wangena wangahlali phasi wema ngetinyawo futsi wangasibingeleli nekusibingelela kwente njani-ke Mavuso wami?' kusho LaMasuku.

'Wo LaMasuku! Ngiyakutsandza mfati wami kodvwa ungacabangi kutsi ngisilima sakho. Mine ngiliVuso leladla umuntfu asesesiswini kwatsi longaphandle wasindza ngematubane ngekutibalekela' Kusho Mavuso ayendzetela kancane.

'Seyini-ke Mavuso wami?'

'Lamuhla wangibita ngaMavuso wakho kwente njani nkhosikati yami? Ugange ngani emini?' Kusho Mavuso avala umnyango cedze atsatse tikhiya atifake esikhwameni selibhuluko lakhe. Nguye loya acondza ekhishini. Wefika wakhanyisa, wakhandza indvodzana yakhe Sibhuluja ilele. Ngesikhatsi Mavuso ashona ekhishini, Macatsa walinga kuphuma ngephasi kwembhedze kodvwa wavinjwa kuva kukhala ticatfulo taMavuso tita ngalapha ekamelweni lekulala.

Wefika Mavuso wahlala etikwembhedze.

'Kunjani Mbo wami? Ngikuphe yini kudla?' Kubuta LaMasuku.

'He!He! Lamuhla ngibitwa ngaboMbo, emagama lengawagcina kudzala kuva ngibitwa ngawo. Ingabe kwentenjani? Kodvwa kutawuvakala. Hhayi, ungatihluphi ngekudla nkhosikati, ngiyabonga,' kusho Mavuso abuka likhandlela belikadze libekwe etikwesitulo.

SAMBA SESIGABA B:

10

SIGABA C

3. Fundza letheksthi lelandzelako bese uphendvula imibuto letawulandzela:

'Awu! LaMasango, ungibandzisa ematfumbu, kwentenjani?'

'Ngitsite ngisatitamisela incwancwa itolo emini lapha edladleni, kwatise phela kutsi nensika bese iwile, kwangena Mphiyakhe angasadle nkhobe tamuntfu. Ngitsite uma ngitsi ngiyamvusele wangiphendvula ngekutsi ngimnike yonkhe imali lenginayo ngekushesha. Ngone ngekutsi anginayo. uvele wangisundvuta, wangifaka sibhakela lapha etimbanjini ngaye ngayewushayisa kabuhlungu etafuleni. Ngitsite ngisuka ngagenuka kabuhlungu ngayewushaya ngenhloko phasi. Ngitsite uma ngitsi bona ngivuke, ingcondvo yami seyihhuma, watilahla inyandzana etikwami washo angekhama, asho nekusho kutsi talukati tatini ngemali, watsi angikhiphe naleselucotfweni ngimcitsela sikhatsi utawuze atfole umtfunti wetinkhukhu uphelile. Ngaleso sikhatsi besengikubona kufa. Impela kube bengite ngabe kutekwa letinye ngami. Ngiko nje ungibona ngikhonkhwe ngasemende.'

'LaMasango, mine ngati kutsi alufakwa lapha kuwe, bacinisile kutsi inkhomo lenemlomo kayinamasi.'

- 3.
- 3.1 Kulesicephu lesingenhla khokha umusho lonelovelomagama lolukhomba kumangala. (1)
- 3.2 Nika inchazelo yalesisho lesidvvetjelwe kulomusho lolandzelako: 'Kwangena Mphiyakhe angasadle nkhobe tamuntfu.' (1)
- 3.3 Phindza ubhale lomusho lolandzelako, kutsi esikhundleni selibintana lelidvvetjelwe ufake ligama linye. 'Ngitsite ngisatitamisela incwancwa, kwatise phela kutsi **insika bese iwile**, kwangena.....' (1)
- 3.4 Phindza ubhale lomusho kutsi esikhundleni seligama lelidvvetjelwe ufake mcondvofana. Uvele **wangisundvuta** wangifaka sibhakela etimbanjini. (1)
- 3.5 Khokha umusho lokulesicephu lesingenhla, lonesinongo sesihabiso uwubhale phasi. (1)
- 3.6 Tsatsa lesaga usisebentise emshweni wakho lotakhele wona , kute kuvele kutsi inchazelo yaso uyayati. Inkhomo lenemlomo kayinamasi. (1)
- 3.7 Akha umusho ngaleligama lelilandzelako lelitsetfwe kulesicephu lesingenhla kute kuvele umcondvo lowehlukile kulona lokulesicephu: '**kutekwa**' (1)

- 3.8 Tsatsa ligama lelidvvetjelwe kulomusho lolandzelako ulisebentise emshweni kute kuvele inchazelo/inshokutsi lensha: (1)
Ngitsite ngisatitamatisela incwancwa itolo emini lapha **edladleni**.....
- 3.9 Utsini wakho umbono ngalomusho lolandzelako lonenkholelolite: (2)
' talukati tatini ngemali.' [10]
4. Fundza lethekesthi lelandzelako bese uphendvula imibuto letawulandzela:
- 'Asusho-ke Mandla, bewukuphi itolo?' Dvu Mandla. Washo thishelanhloko walapha eMpuluzi ambuke ngekumsola Mandla. Mandla lona ukutsandza kabi kungeti esikolweni. Phela kufanele kutsi bantfwana batifundzele bona inhlonipho. Umuntfu lohloniphako uyatsandzeka emmangweni wangakubo. Uyadvundvubala ngisho nasemmangweni. **Lokwebantfwanyana lokungalaleli kutingcwaba kusaphila.** Kutidvweba kabi loko. Tikolo tibekelwe kulungisa loko. Bantfu labangalandzeli timiso njengaye Mandla abakalungi. Bayabati lapho batsandza kunatsa khona tjwala. Babutsi goje nje nababona thishelanhloko. Bagijima babuphetse tjwala babo.
- 4.1 Kunemusho loneligama lelipelwe kabi kulethekesthi. Libhale ngendlela leyemukelekile bese wakha ngalo umusho libe ngumentiwansombo, bese uyalidvwebela.
- 4.2 Hlela lamagama ladvvetjelwe ngendlela lalandzelana ngayo encwadzini yesichazamagama. Ungayibhali imisho. (2)
- 4.2.1 **Kudvweba** kabi loko. (2)
- 4.2.2 **Uyadvundvubala** ngisho nasemmangweni. (2)
- 4.3 Bhala lomusho lokulethekesthi ube yinkhulumombiko: (2)
'Asusho-ke Mandla, bewukuphi itolo?' Kwasho thishelanhloko.
- 4.4 Esikhundleni seligama lelitsi **Mandla**, sebentisa lelitsi **emadvodza** bese uwubhala wonkhe umusho. (2)
Mandla lona ukutsandza kabi kungeti esikolweni.
- 4.5 Shano kutsi sijobelelo ngasinye lesidvvetjelwe kulemisho lelandzelako siletsa mcondvo muni kulowo nalowo musho:
- 4.5.1 Umuntfu lohloniphako uyatsandz**eka** emmangweni. (1)
- 4.5.2 Kufanele kutsi bantfwana batifundz**ele**. (1)

- 4.6 Yini lebangela umusho wekucala kuletheksthi usebentise letimphawu letikubakaki(' ')? (1)
- 4.7 Ligama, sikolo, litsetfwe esibhunwini. Yini leyenta lehluke kulelo lesiBhunu? (2)
- 4.8 Msebenti muni lowentiwa sentakutsi, 'goje,' kulomusho lolandzelako? Babutsi goje nje nababona thishelanhloko. (1)
- 4.9 Kuletheksthi caphuna imisho lekuletindlela tesento letilandzelako:
- 4.9.1 Indlela yesimo. (1)
- 4.9.2 Indlela lesalibito. (1)
- 4.10 Shano umsebenti wesabito selucobo, **lona**, emshweni wesine kuletheksthi lengenhla. (1)
- 4.11 Kuletheksthi lengenhla kunemusho lomagalagala. Wubhale phasi njengobe unjalo bese udvwebela umusho loyinhloko. (2)
- 4.12 Yini lebangela lamagama abhalwe ngetinhlavu letinkhulu:
Lokwebantfwanyana lokungalaleli kutingcwaba kusaphila. (1)

SAMBA SESIGABA C: [20]

SAMBA SAKOKONKHE: 70